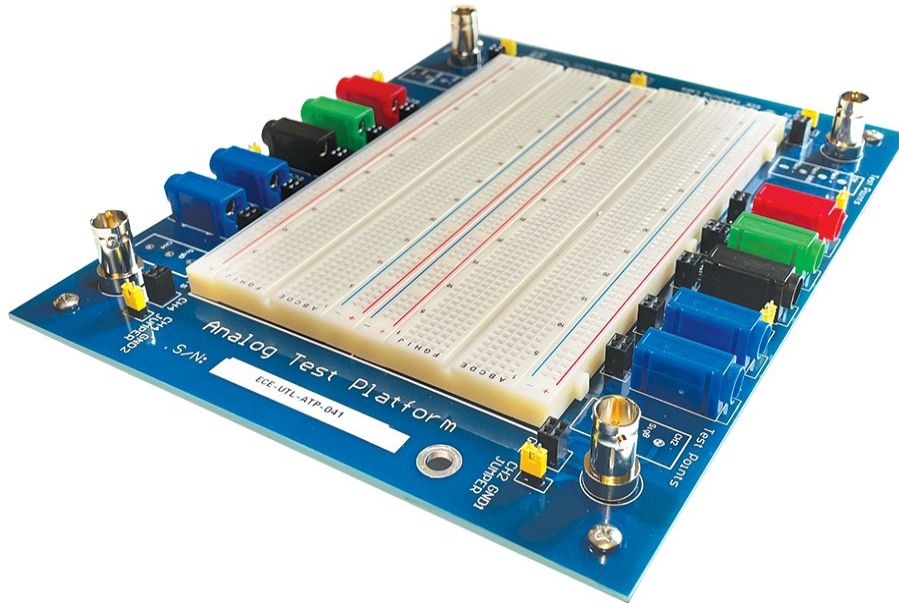
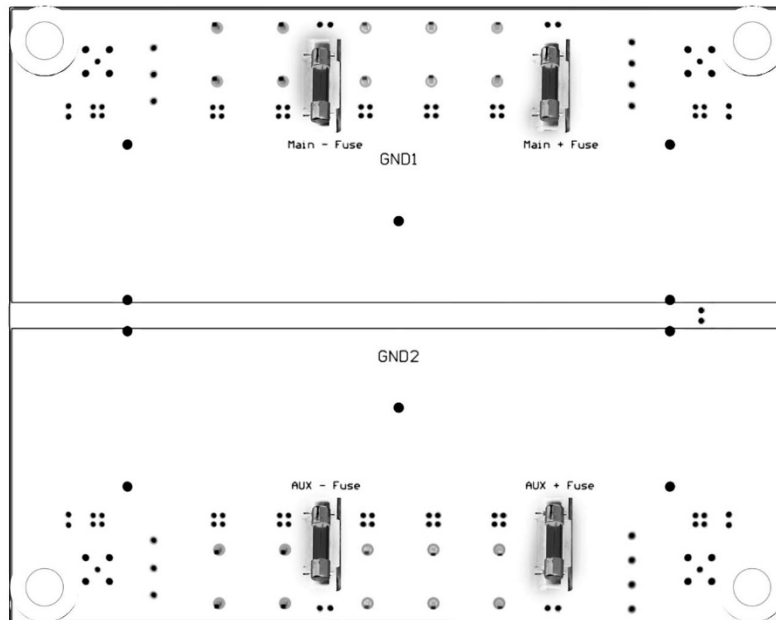


# Analog Test Platform

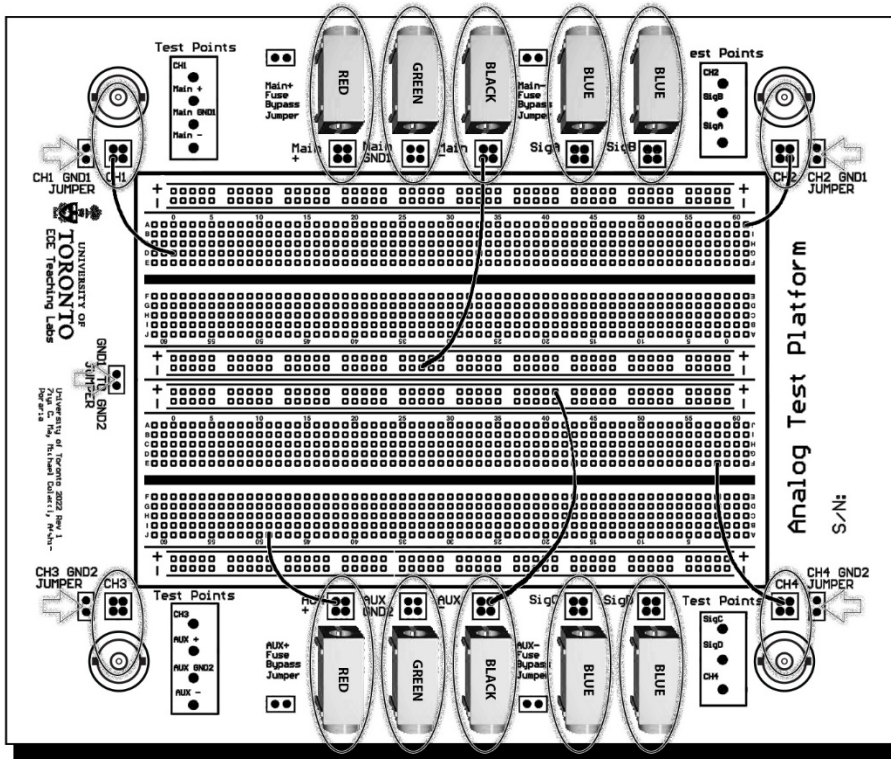


The protoboard may be viewed as a neatly arranged set of interconnecting wires, as indicated by thick lines in the drawing shown in Fig. A-1. Signals are brought to and from the protoboard via terminals (sockets) and BNC connectors. Internal connections between sockets and some of the protoboard “wires” are shown by dotted lines.

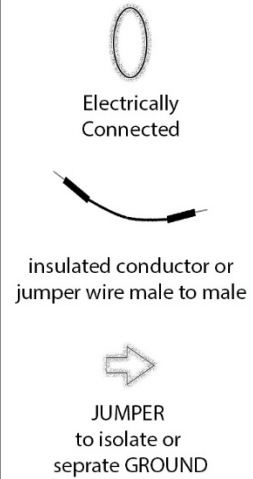


Back of the ATP

**Before each experiment, carefully check the connections between the sockets and associated rails to fix connections to the red, green and black sockets if needed. Report broken BNC connections to a TA immediately.**



Analog Test Platform Connection Overview



### Feature Basics

- Supports up to 10 Banana Connections
- Supports up to 4 BNC Connections
- 2 full size breadboards
- 2 Separate ground planes
- 4 protection fuses
- Readily available connection test points

